

Lilianae

(monokotiledone)

Komelinide

Arecales (Arecaceae)

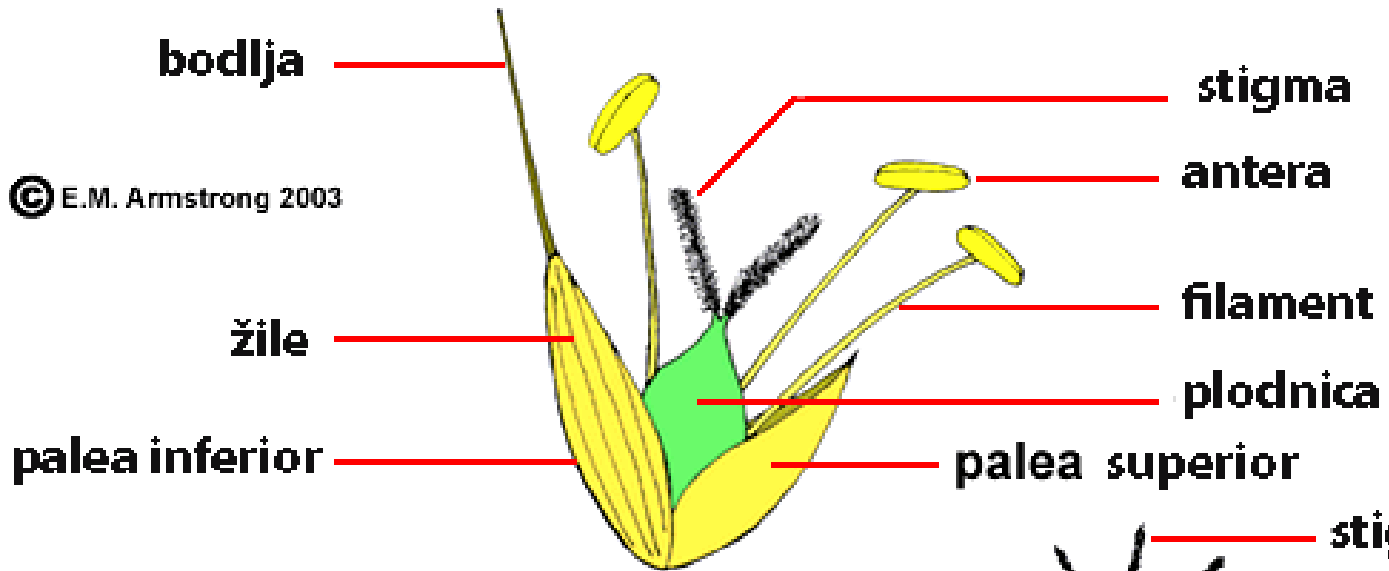
Commeliniales (Commelinaceae)

Poales (Bromeliaceae, Poaceae, Cyperaceae,
Juncaceae, Sparganiaceae, Typhaceae)

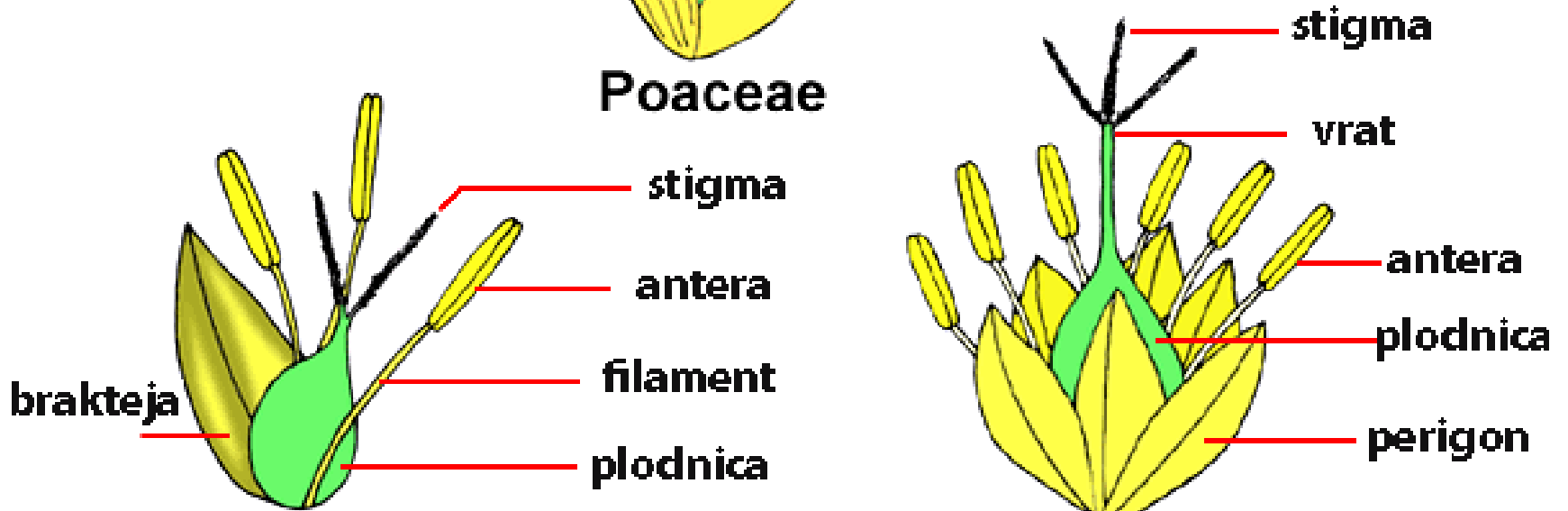
Zingiberales (Cannaceae, Musaceae, Zingiberaceae)

Nativni predstavnici

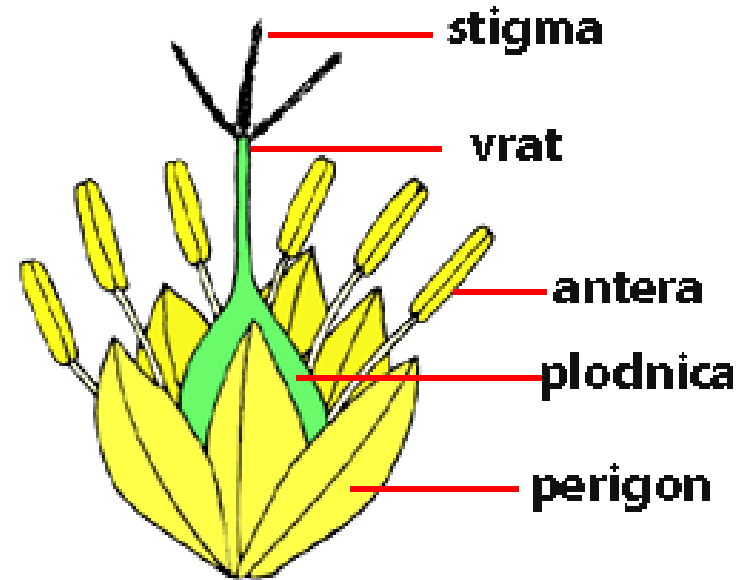
© E.M. Armstrong 2003



Poaceae



Cyperaceae



Juncaceae



**Cvast
terminalna**

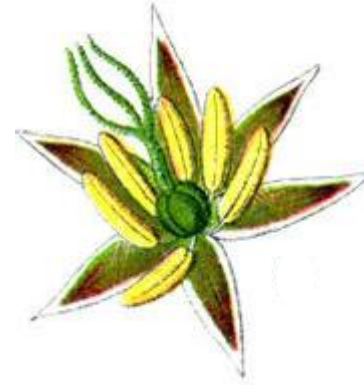
Juncus articulatus



Juncus acutus

**Cvast
prividno
terminalna, tj.
nadvisuje je
brakteja koja
liči na stablo**

Cvjetovi u gustim
glavičastim klasićima



Antere duže od
filamenta

Luzula campestris



Cvjetovi
pojedinačni

Luzula fortsteri



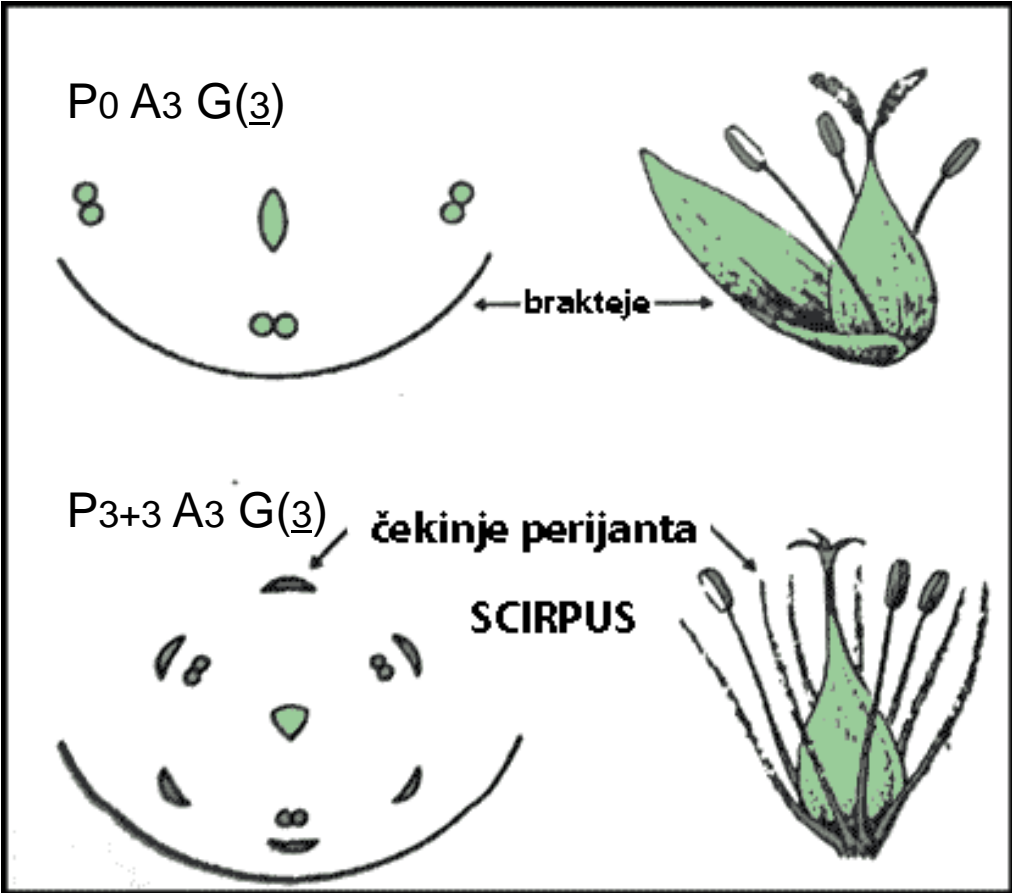
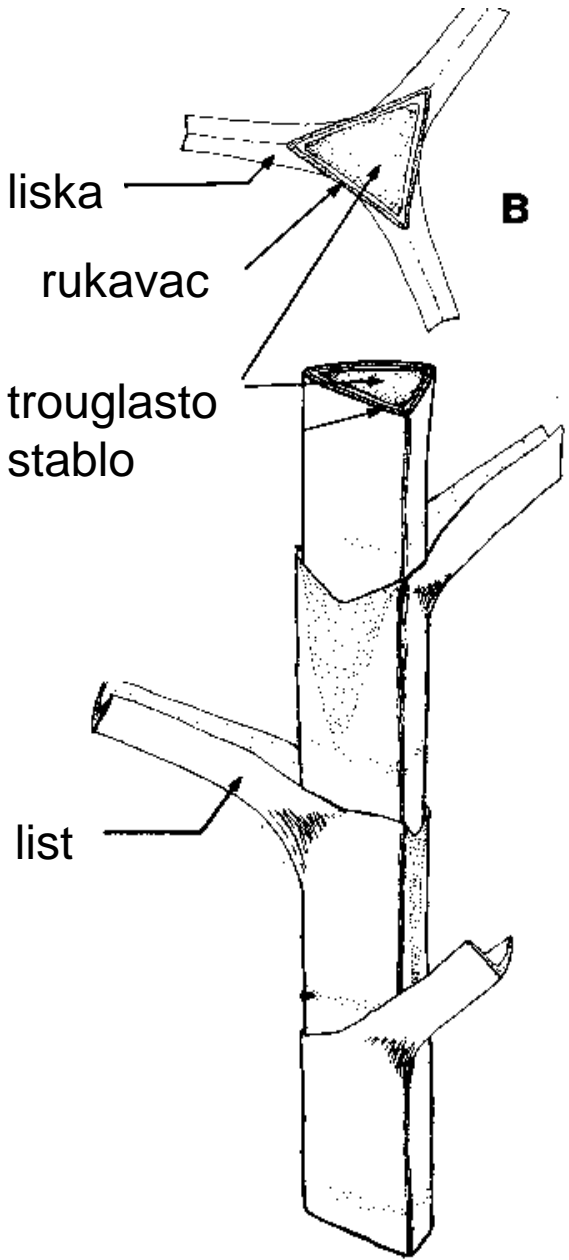
Prijvjezak na
sjemenu- kraći
od sjemena.

**Cvjetovi
sakupljeni u
čuperke**

Luzula sylvatica

**Cvast znatno nadvisuje
brakteje.
Donji listovi do 7mm široki**

Cyperaceae



Schoenus nigricans



P₃₊₃ A₃ G(3)

Eleocharis palustris



Holoschoenus vulgaris



P0 A3 G(3)



P₀ A₃ G(3)



Cyperus capitatus

Klasići mješoviti,
gornji cvjetovi muški



2 njuške



rukavac



Carex divulsa

Muški klasić

Ženski klasići, 3 njuške

1 cm



vrećica



Jedan muški
klasić u vršnom
dijelu; ženski
klasići su sjedeći.

Carex verna

vrećica

♀ cvijet u pazuhu
brakteje

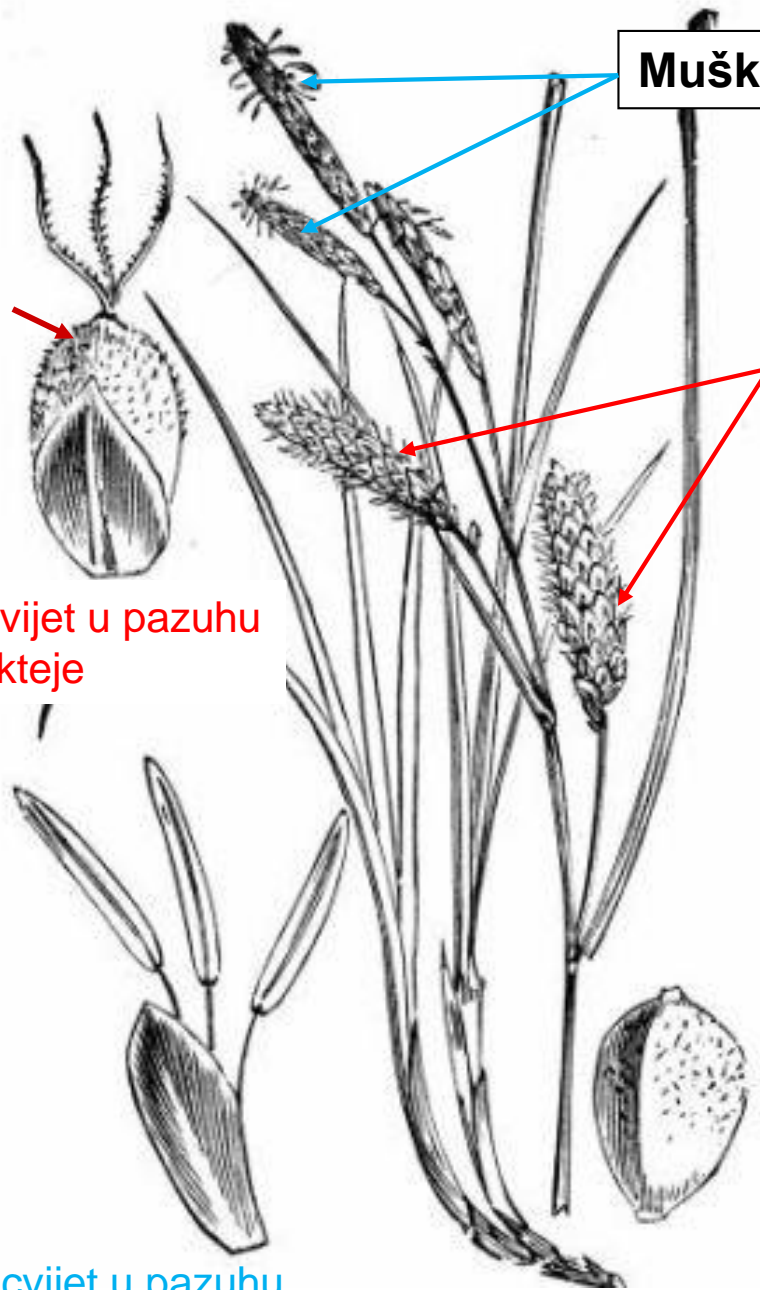
♂ cvijet u pazuhu
brakteje

Muški klasić

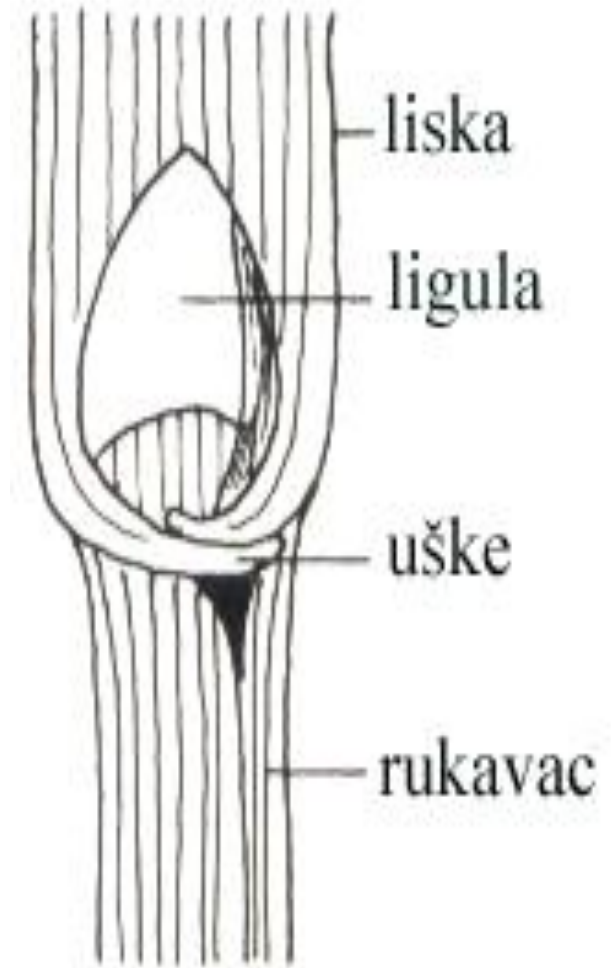
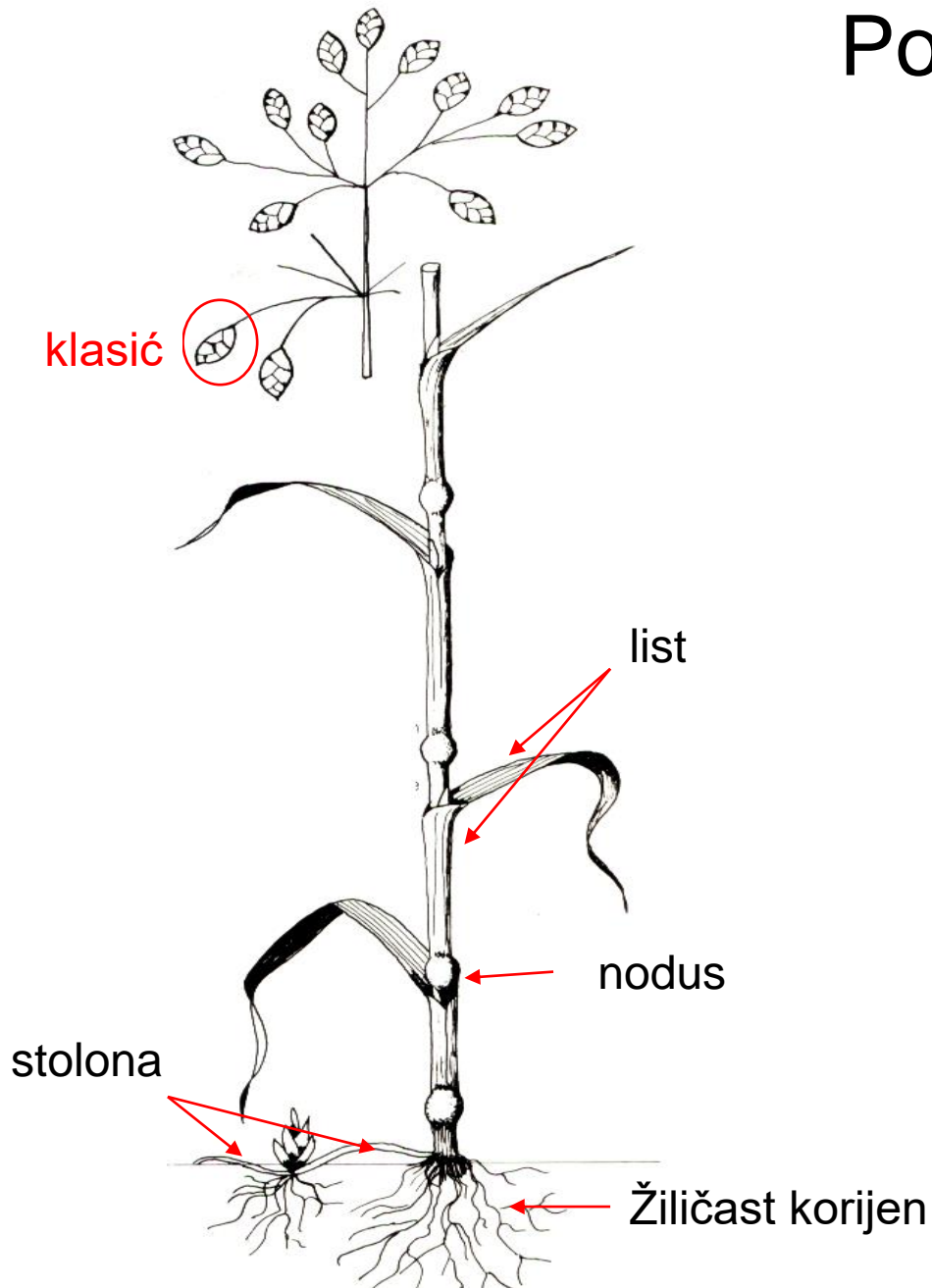
Ženski klasići

Dva muška
klasića u vršnom
dijelu, a ženski
klasići su na
drškama

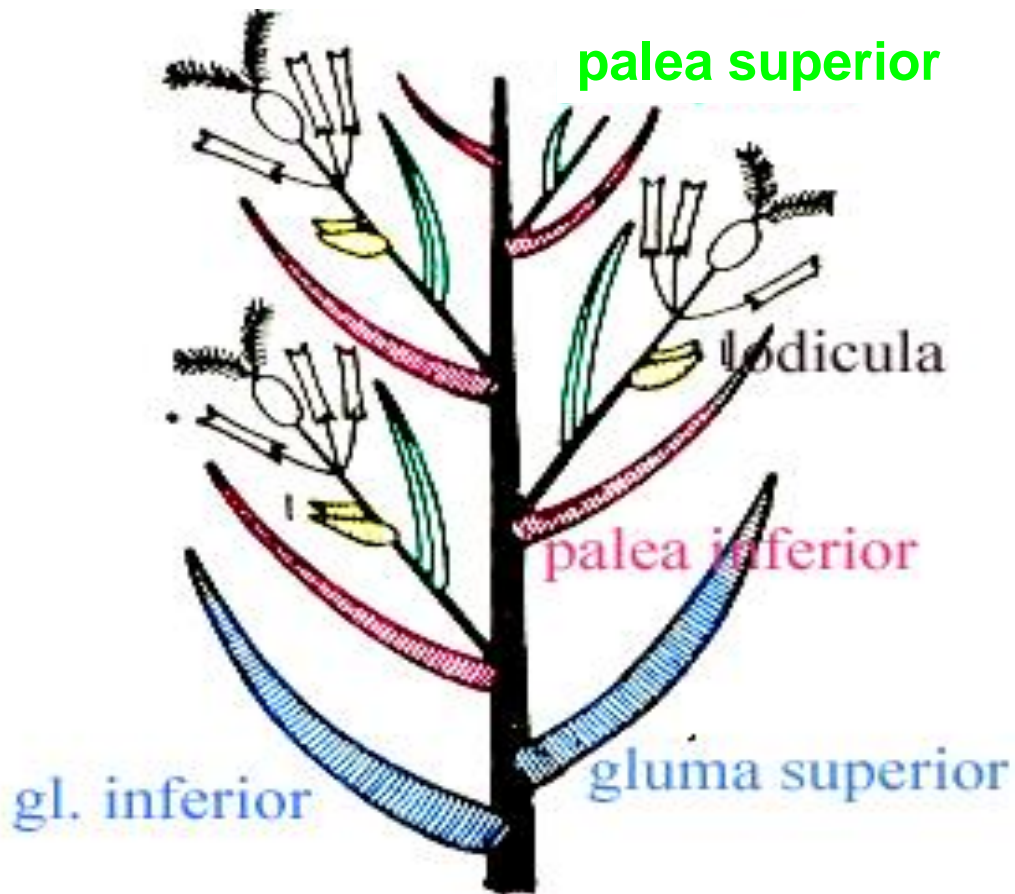
Carex flacca



Poaceae, trave



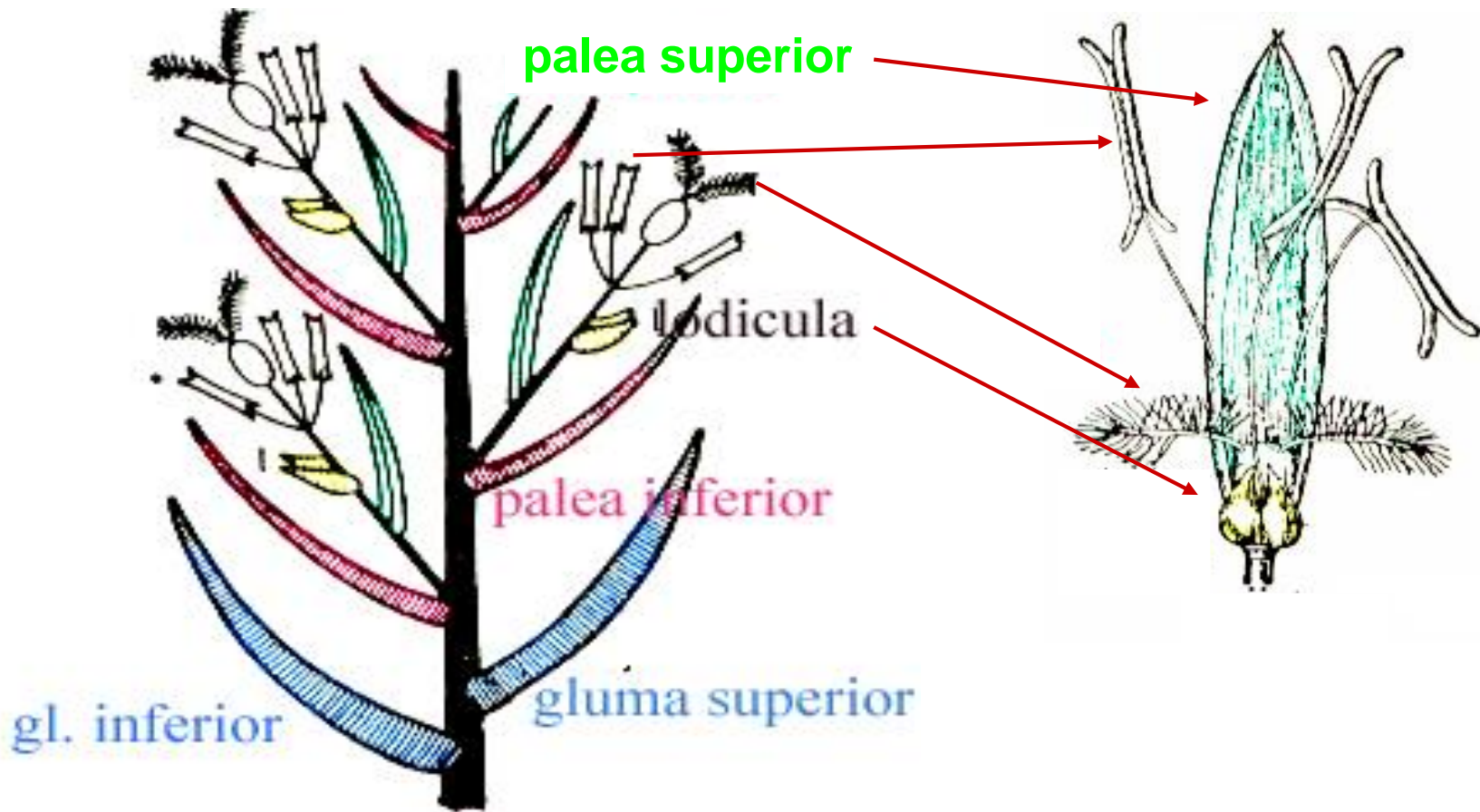
Opšta građa klasića trava



Treminologija po flori Hrvatske:

glume = pljevice; palea inferior = obuvenac; palea superior = košuljica

Opšta građa klasića trava



Treminologija po flori Hrvatske:

glume = pljevice; palea inferior = obuvenac; palea superior = košuljica

Tipovi cvasti kod trava



klip



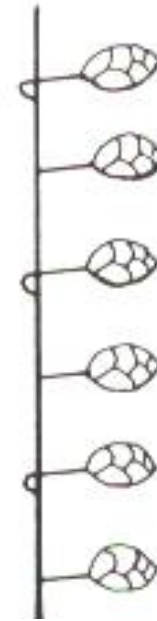
klas



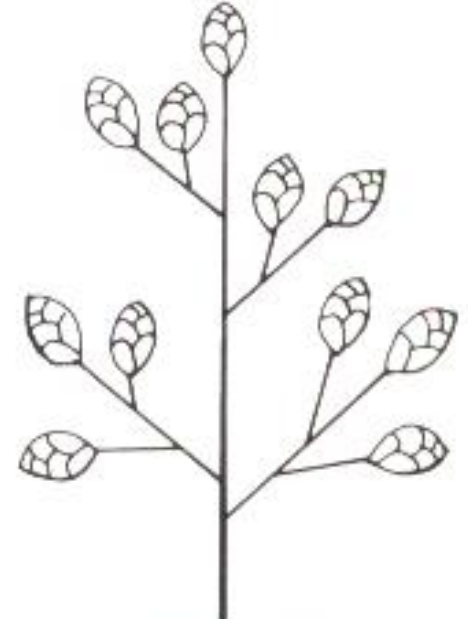
složeni klas



grozd

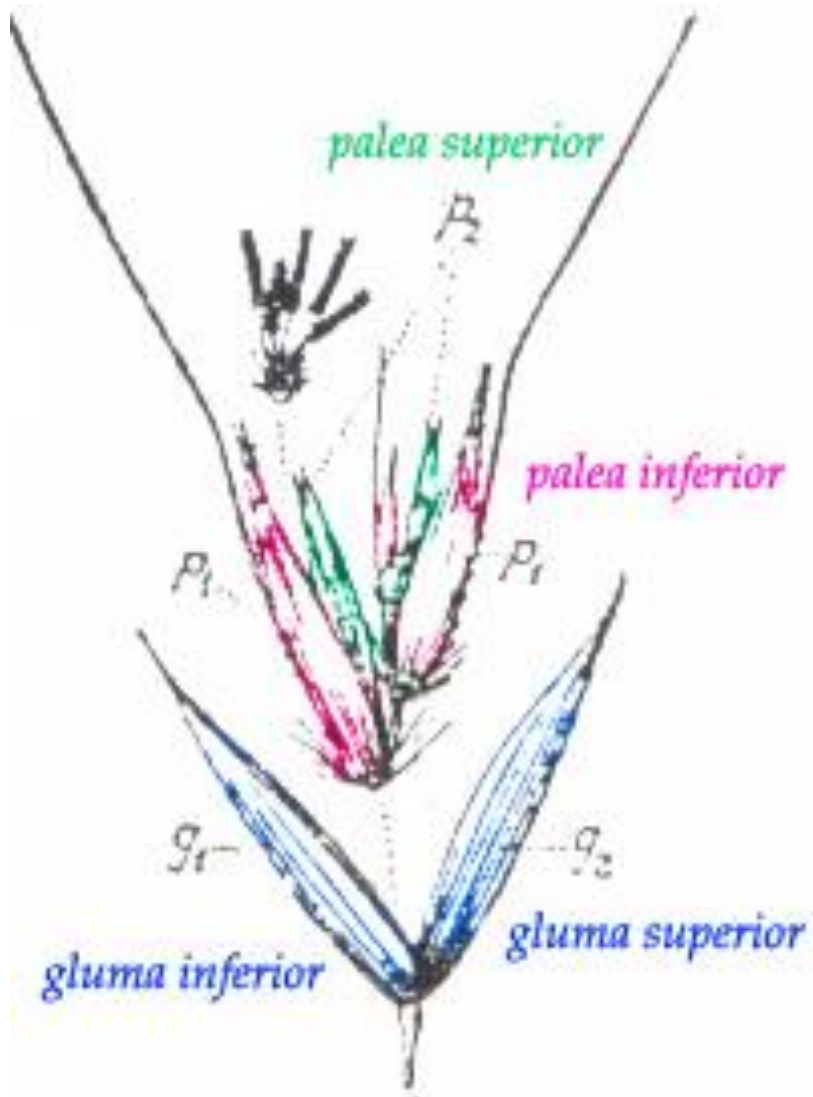


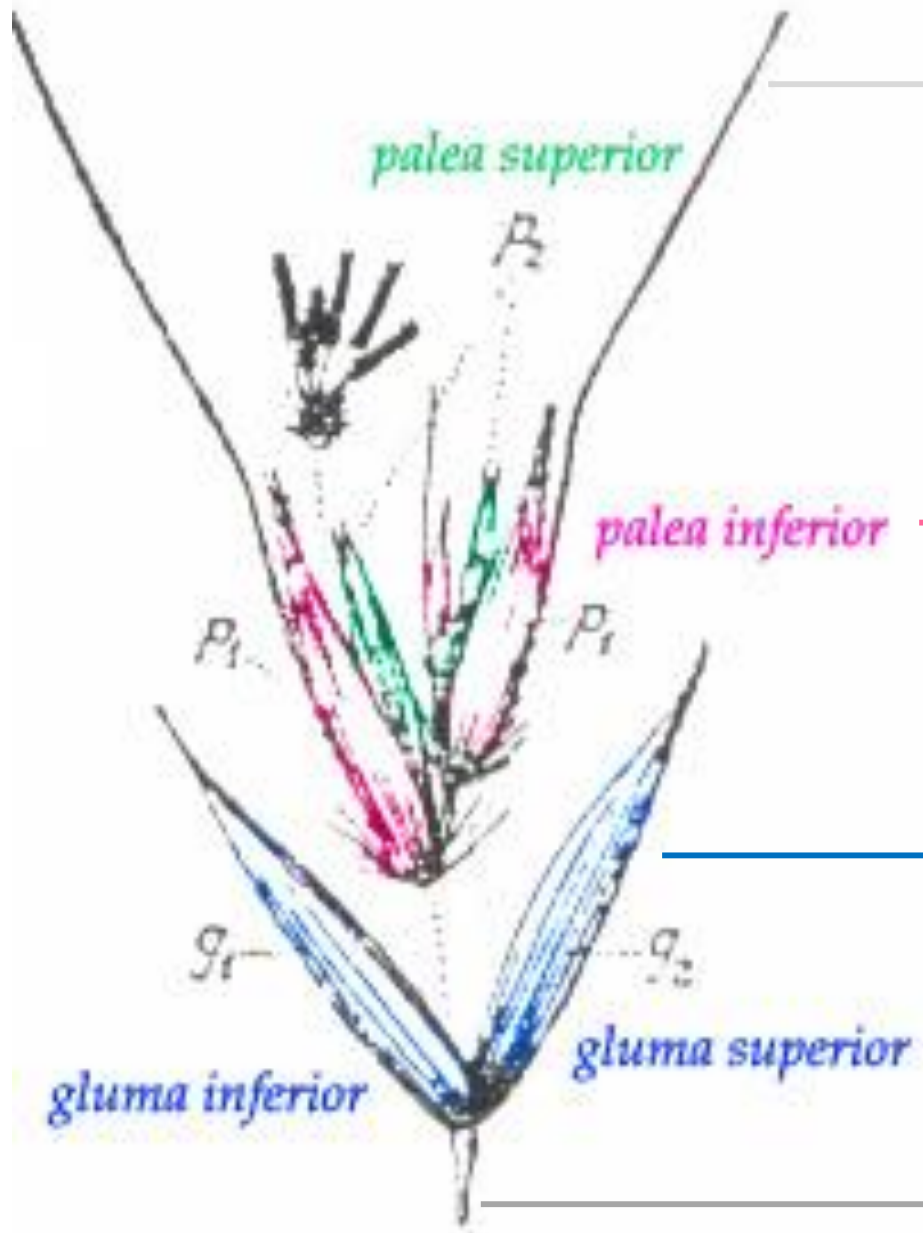
jednostrani
grozd



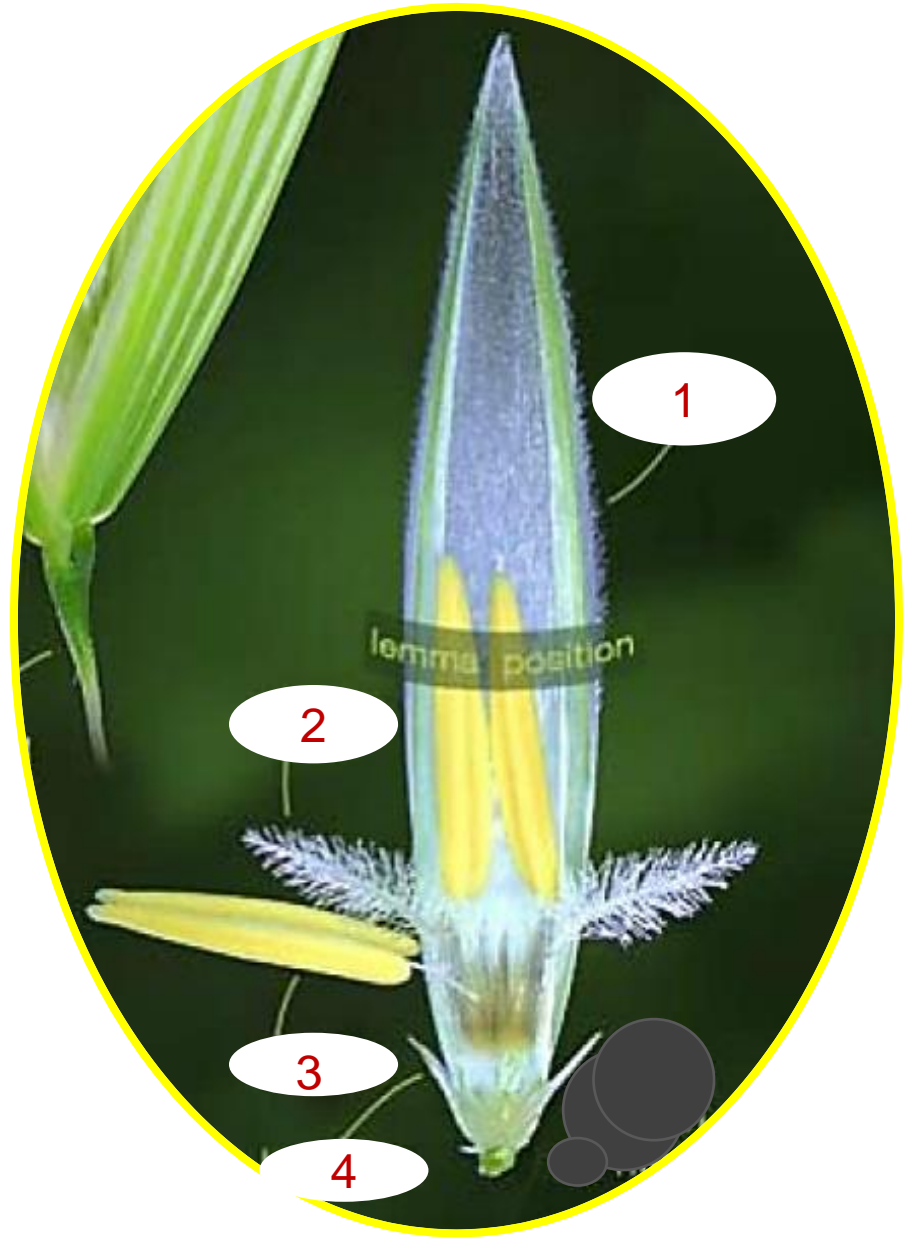
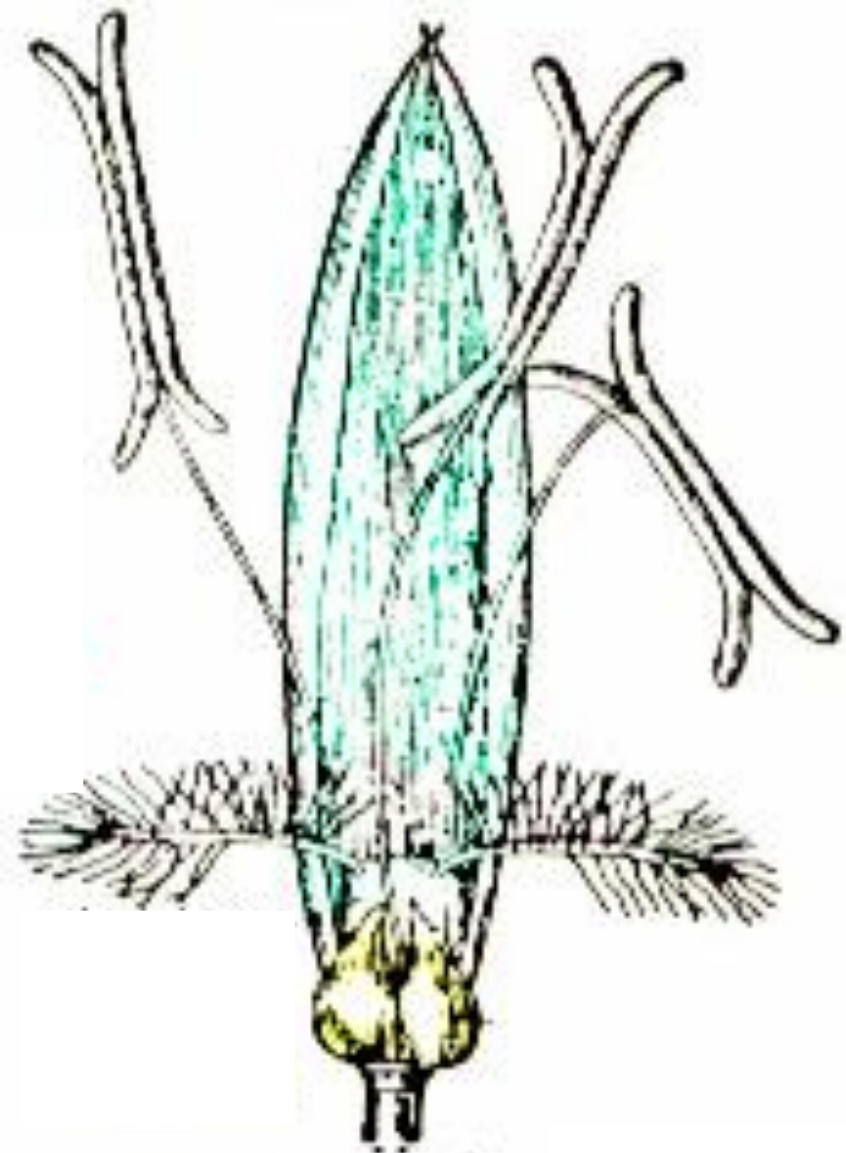
metlica

Avena barbata





Avena barbata



Npravite legendu: 1-, 2-....., 3-
4-.....

Aegilops ovata

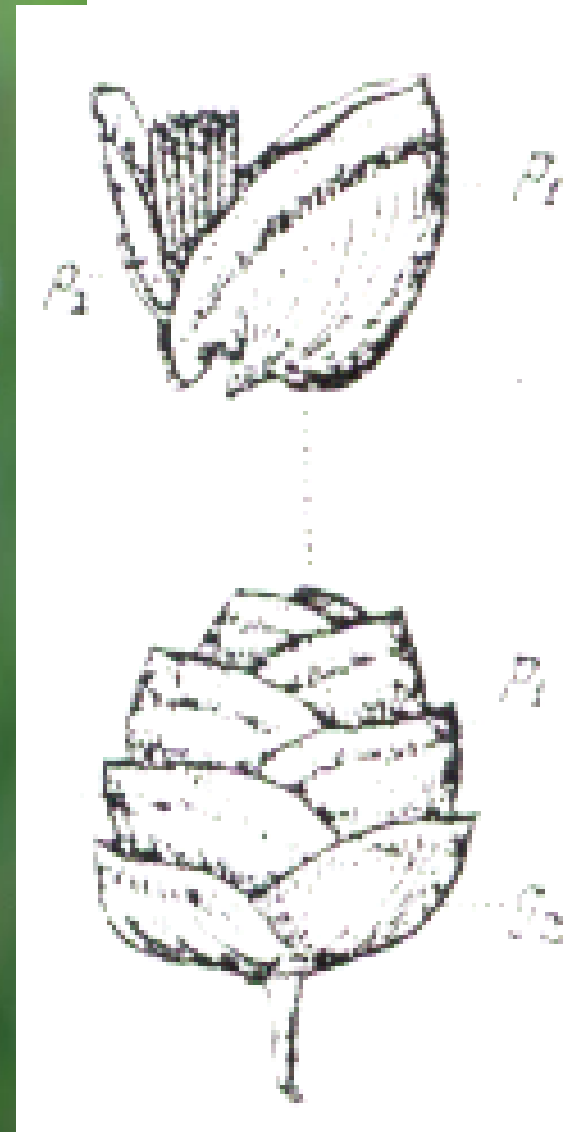


Klasići višecvjetni!



Gluma (pljevica) sa bodljama!!!

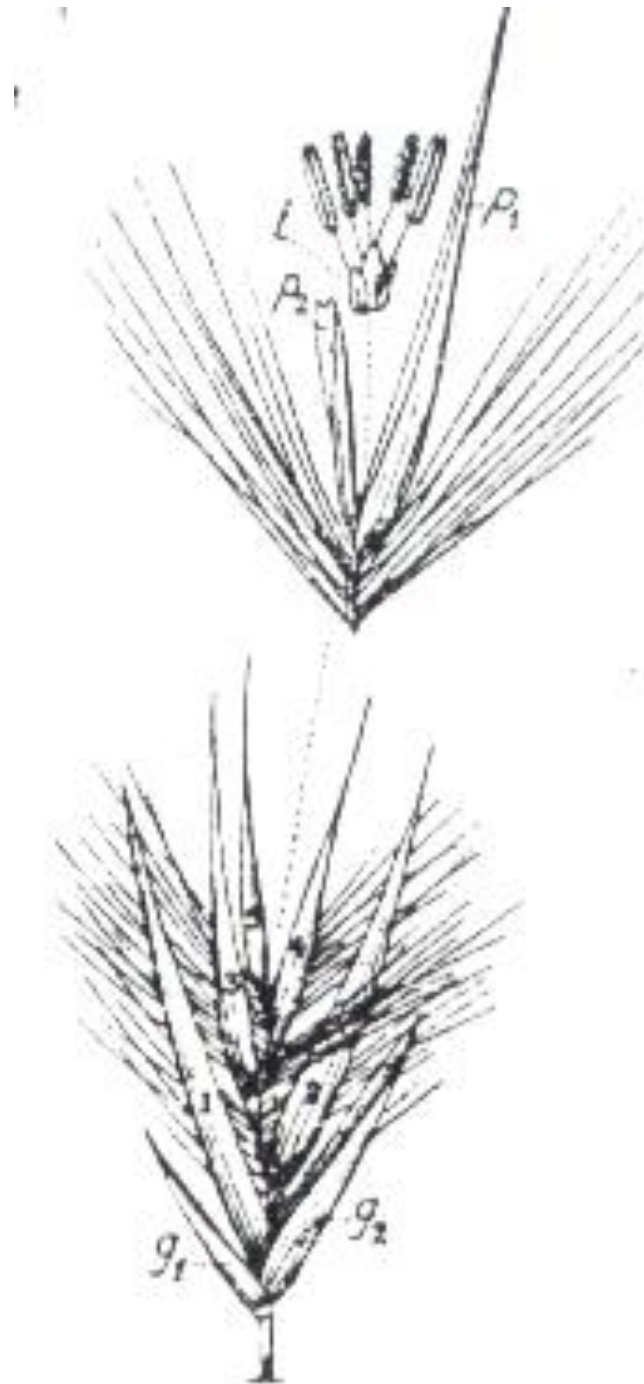
Briza major



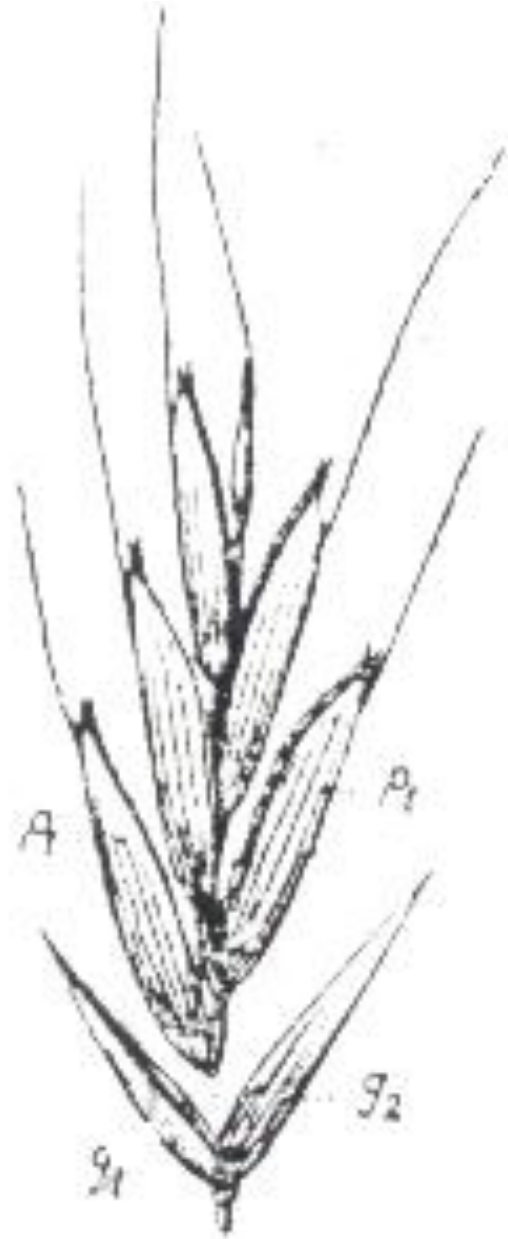
Phragmites australis- trska



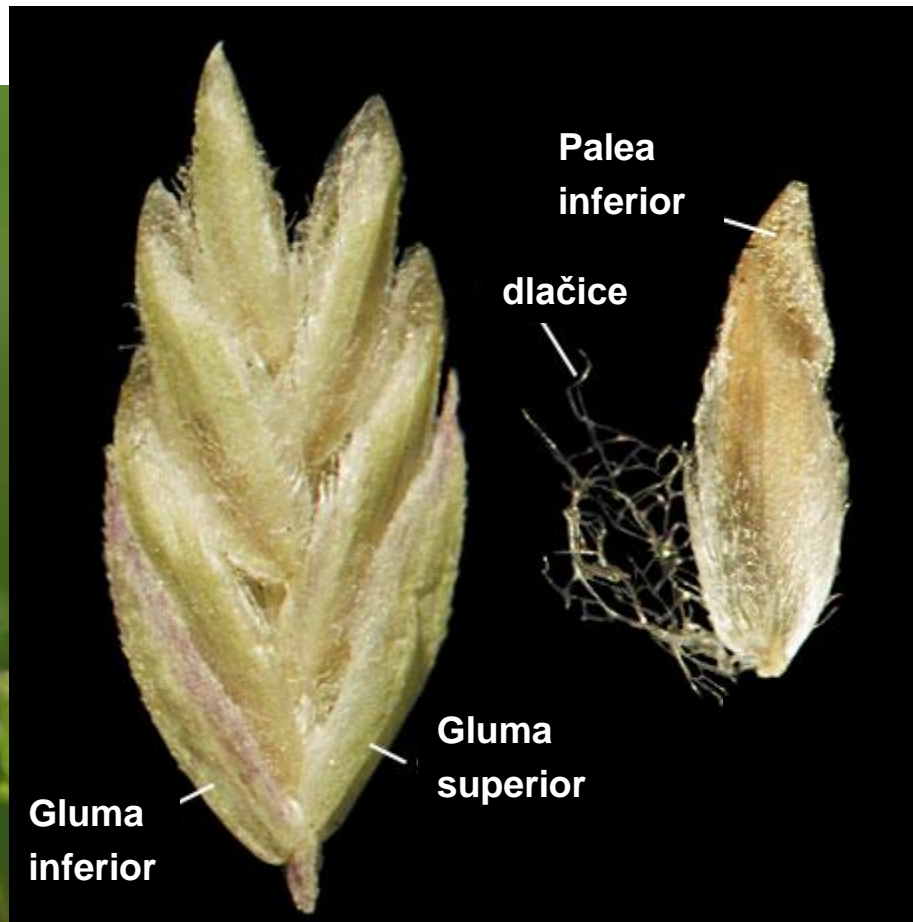
**Os klasića sa dugim
dlakama!!!**



Bromus sp.- ovsik

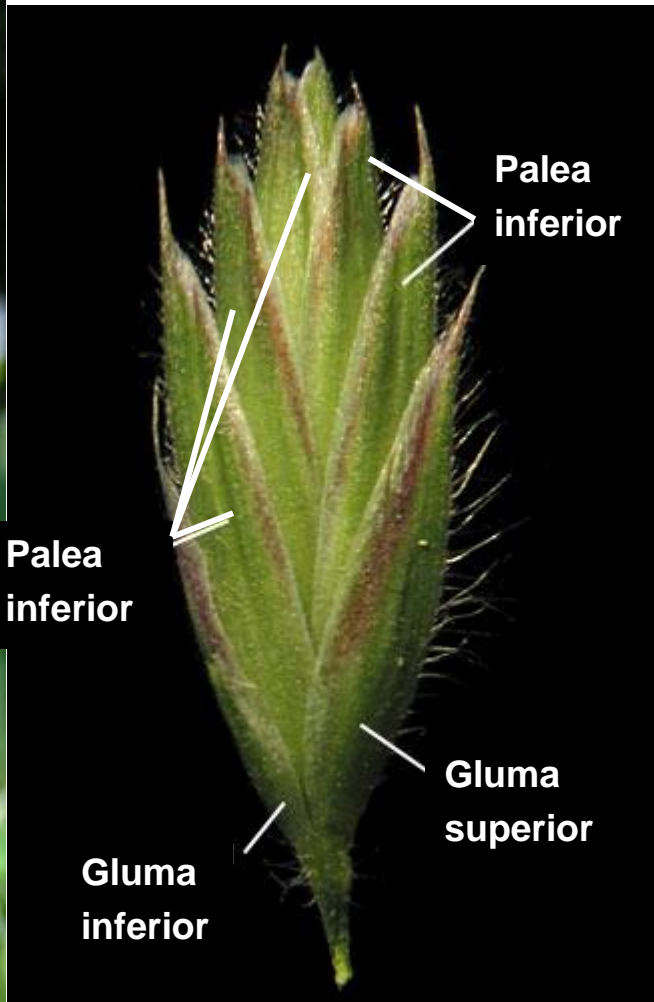


Poa sp.





Dactylis glomerata- ježika



Melica ciliata

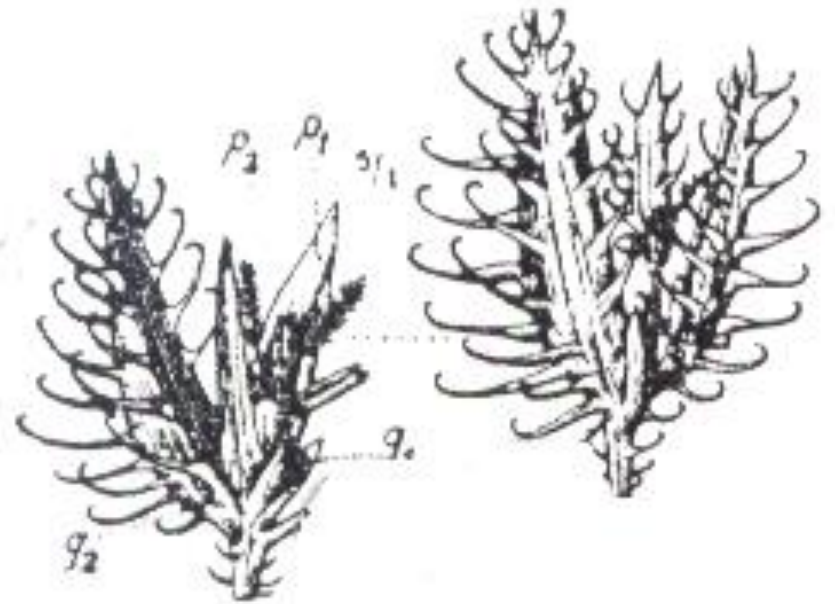


**Klasići osim fertilnog
sadrže i sterilan
cvijet!!!**

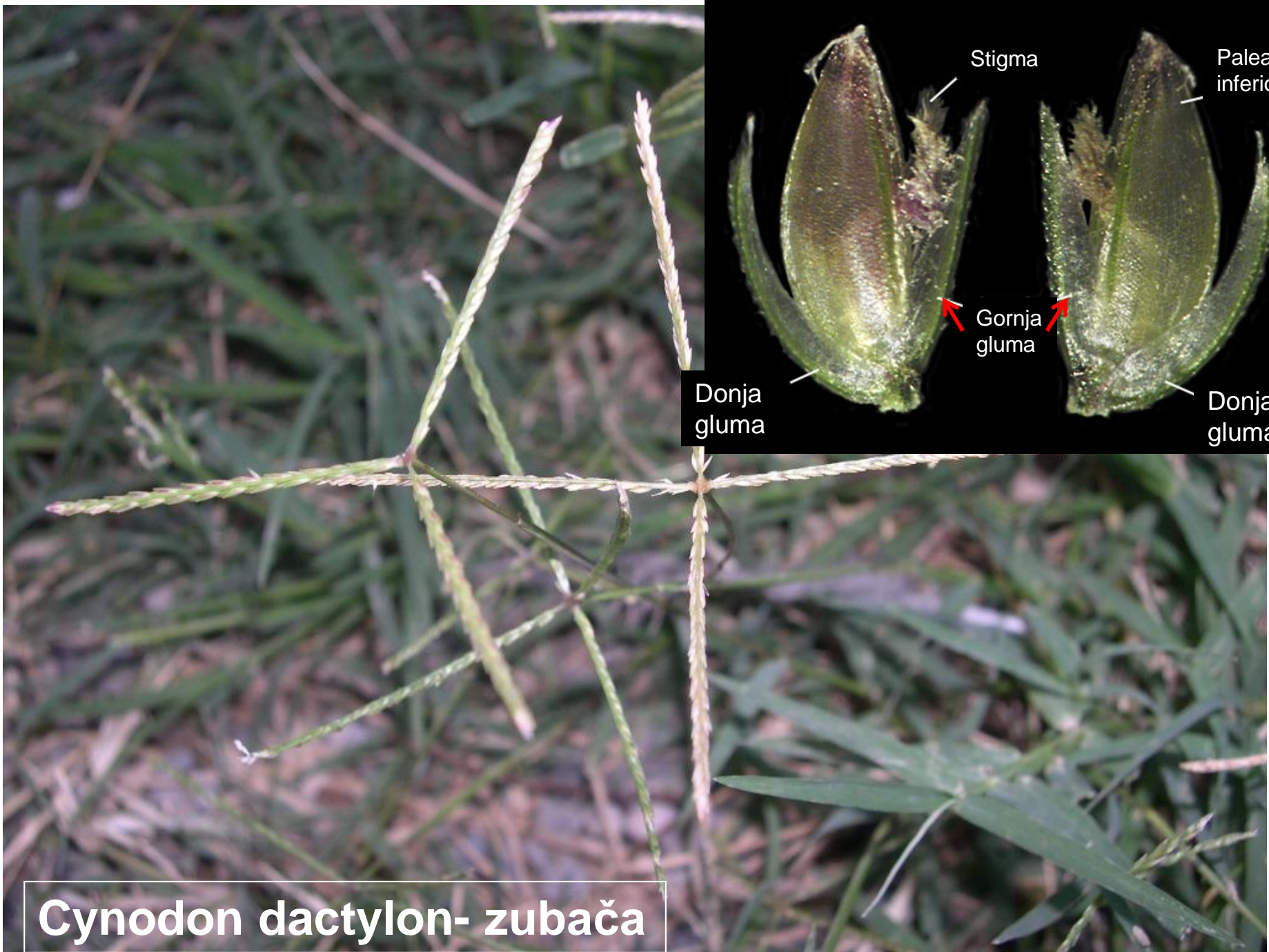
Tragus racemosus



Klasići jednocvjetni!



Gluma (pljevica) sa kukastim čekinjama!!!

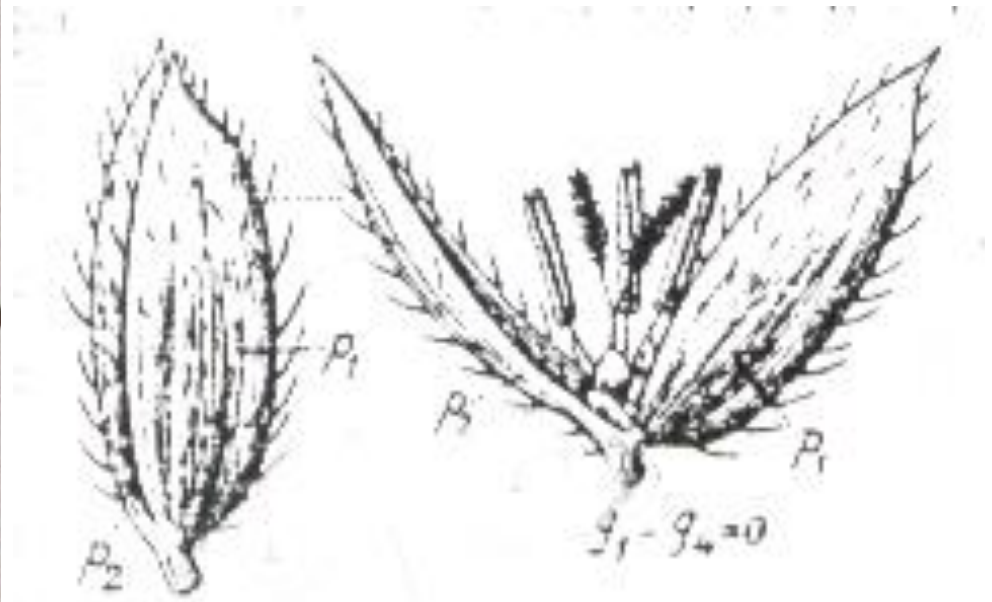


Cynodon dactylon- zubača



Stipa pennata- vilina kosa





Gluma (pljevica) nema!!!

Leersia oryzoides- divlji oriz

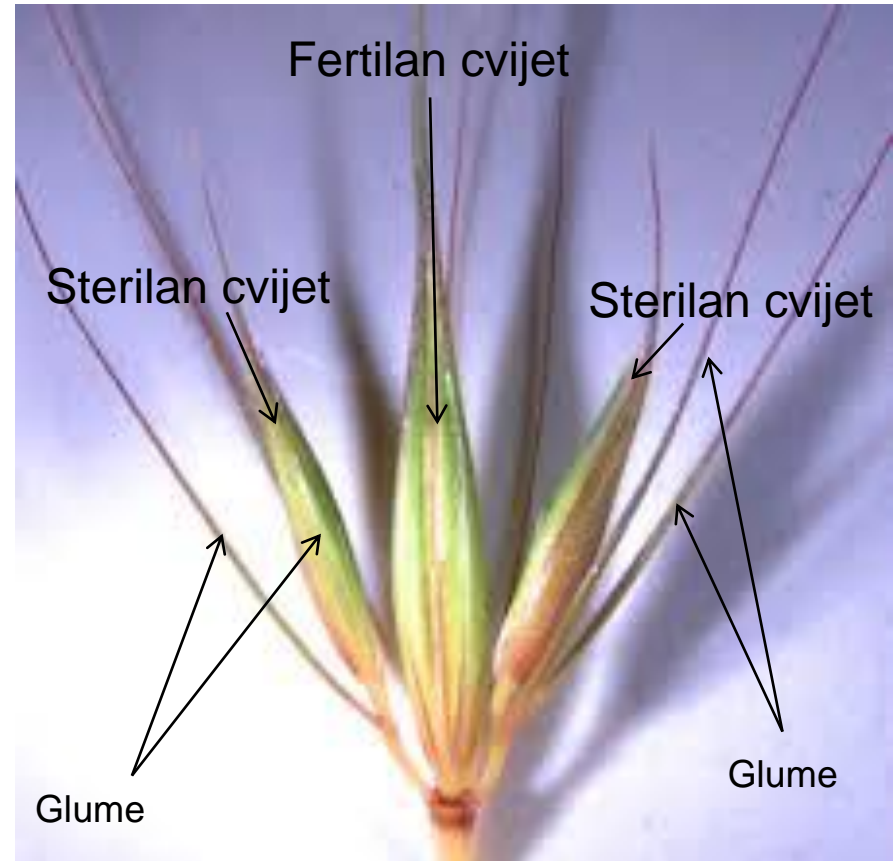
Jedinke iste vrste, samo različite veličine ili u različitom stadijumu razvijenosti ili



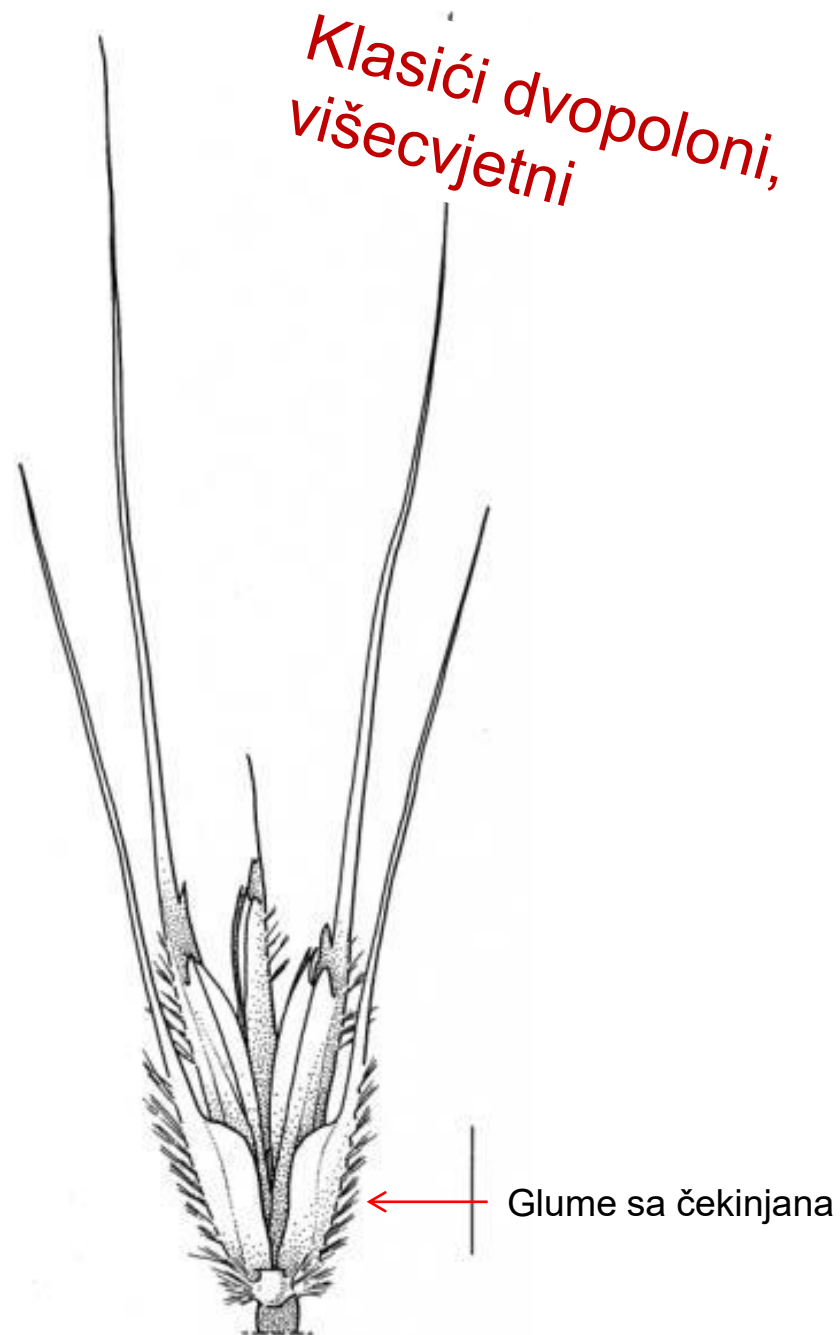
Hordeum murinum

Divlji ječam, popino prase

*Klasići dvopoloni,
jednocvjetni*



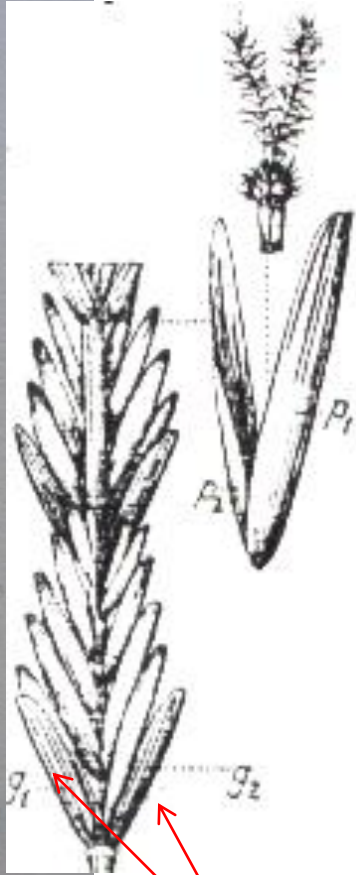
Haynaldia villosa



Jedinke iste vrste,
samo različite
veličine ili u
različitom stadijumu
razvijenosti ili

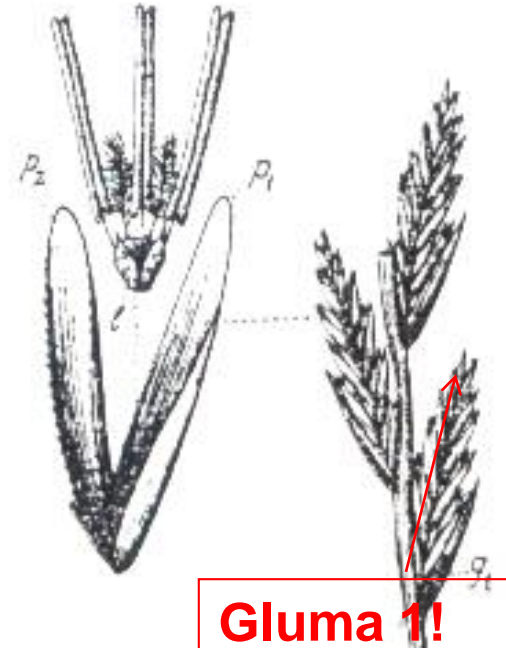


Agropyron sp.



Glume 2!

Lolium sp.



Glume 1!

Zea mays- kukuruz



Klasići jednopoloni

Ženski cvast tipa klipa,
muška tipa metlice



Oryza sativa- oriz

Šestočlan andreceum!





Ovas



Pšenica



Ječam



Riža



Proso



Raž



Kukuruz



- Ovas- *Avena sativa*
- Pšenica- *Triticum vulgare*
- Ječam- *Hordeum vulgare*
- Raž- *Secale cereale*
- Proso- *Panicum miliaceum*

Sparganiaceae



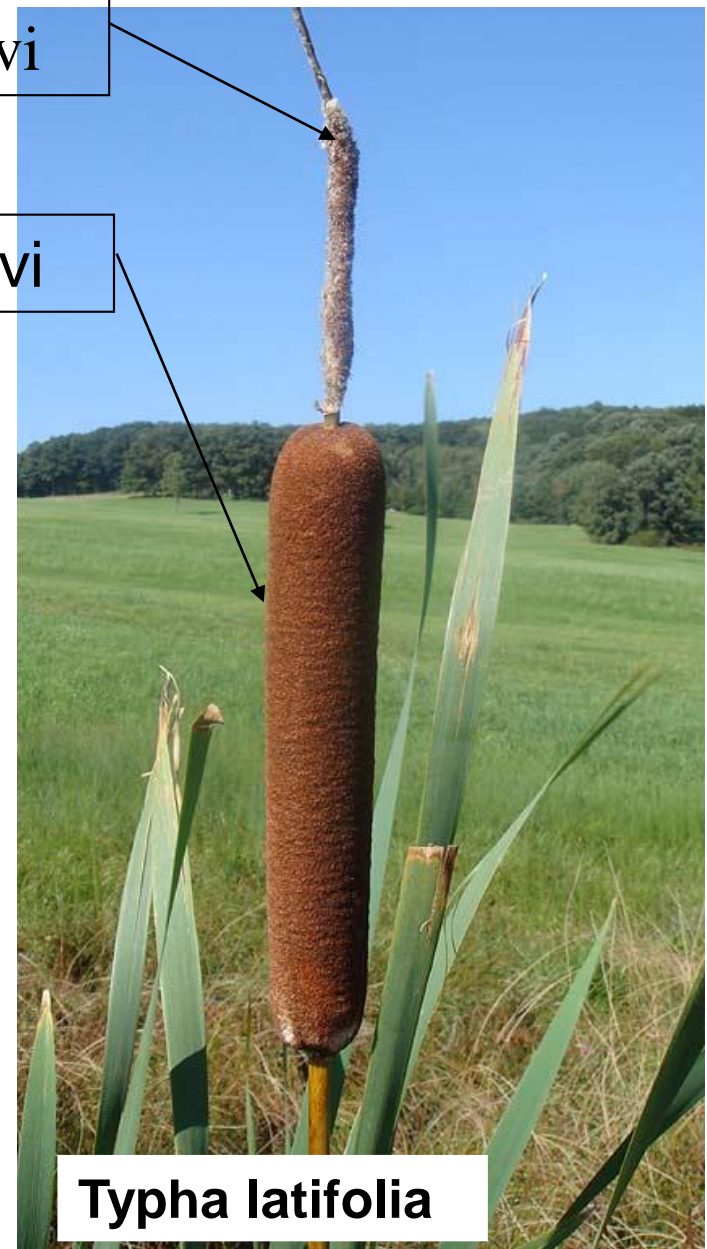
P2 A2

P2 G1

Sparganium erectum

Typhaceae

$P^\infty A_3, P^\infty G_1$



Areaceae



Chamaerops humilis

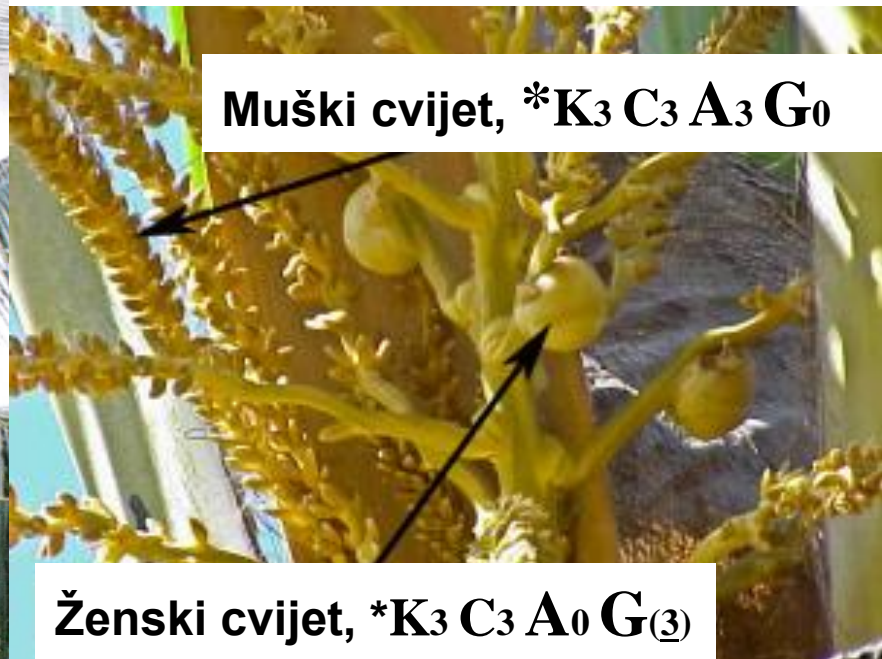


* $P_{3+3} A_{6^{st}} G_{(3)}$

* $P_{3+3} A_{3+3^t} G_0$



Cocos nucifera- kokos



Muški cvijet, *K₃ C₃ A₃ G₀

Ženski cvijet, *K₃ C₃ A₀ G₍₃₎



Commelinaceae



Commelina communis

↑ **K₃ C₃ A₃₊₃ G₍₃₎**

Bromeliaceae



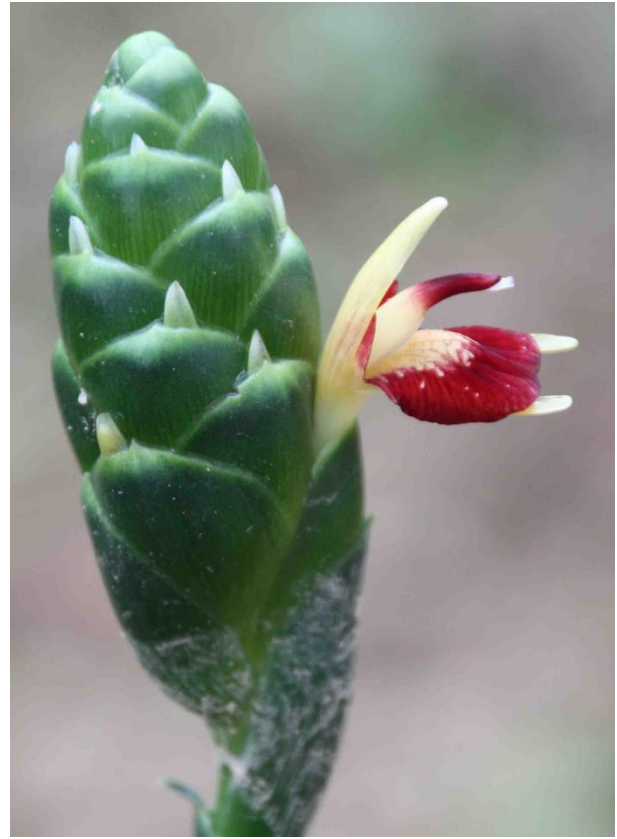
***K₃ C₃ A₃₊₃ G/(3)**

Ananas sativus

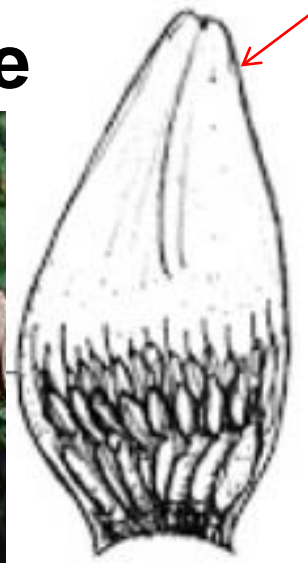
Zingiberaceae



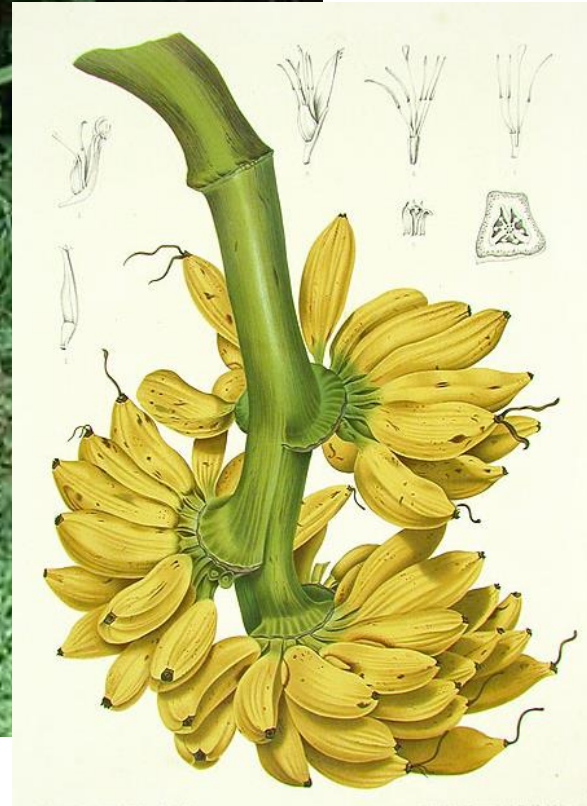
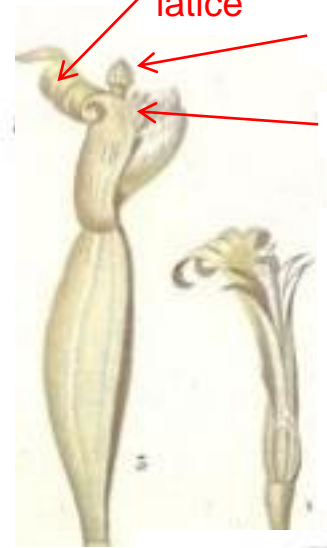
Zingiber officinale



Musa x paradisiaca, Musaceae

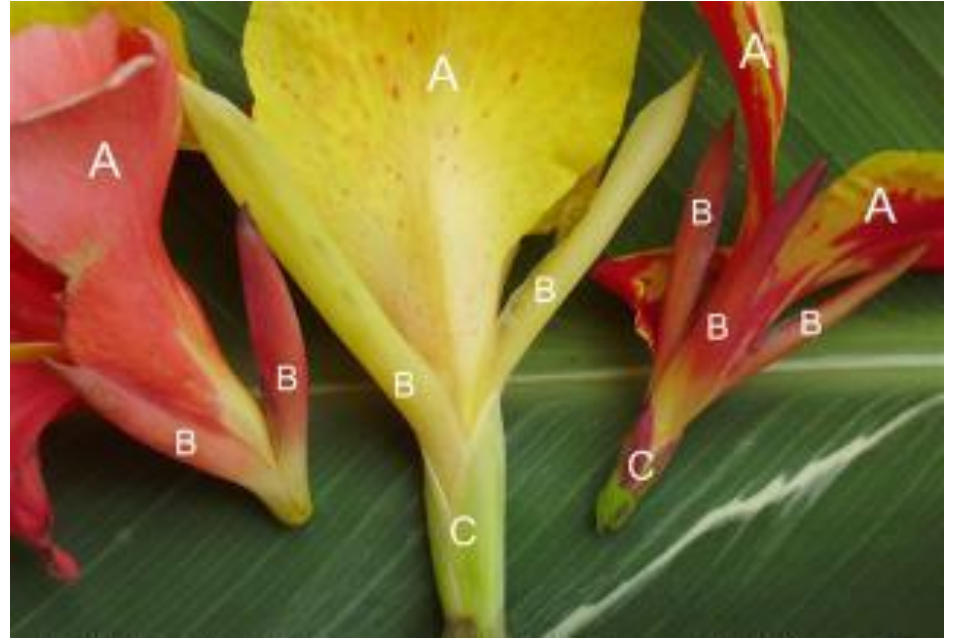


spata
 Srasle
 latice
 Stigma
 Prašnici



$P_{(3+2)+1}, A_{3+3}, G_0.$
 $P_{(3+2)+1}, A_0, \overline{G}_{(3)}.$
 $P_{(3+2)+1}, A_{3+3}, \overline{G}_{(3)}.$

Cannaceae



A= Staminodije, B= Krunica, C= Čašica

Canna sp.

Strelitziaceae

$P_{3+(3)} A_{3+2} \underline{G}_{(3)}$



Strelitzia sp.